

**MOTOR SPECIFICATION SHEET**

MODEL : SC-QR 1/4HP 4P

USED FOR : STANDARD

DESCRIPTION	DETAIL			
PHASE	1			
TYPE	CAPACITOR START			
MODEL NAME	SC-QR			
RATED OUTPUT, HP (kW)	1/4 (0.2)			
POLE	4			
CODE	MEATH CODE : 1M001C-400020QRER1			
OUTLINE DRAWING NO.	ONM74O090-*			
RATED VOLTAGE (V)	220	230	220	
RATED FREQUENCY (Hz)	50	50	60	
RATED CURRENT (A)	2.6	2.7	2.3	
RATED SPEED (min <sup>-1</sup> )	1450	1450	1740	
RATED EFFICIENCY (%)	65.5	62.5	70.8	
THERMAL CLASS	120(E)			
RATING	S1 (CONTINUOUS)			
ENCLOSURE CONSTRUCTION	OPEN-PROTECTED			
DEGREES OF PROTECTION	IP20			
METHOD OF COOLING	IC01			
FRAME NO.	A71			
WEIGHT (kg)	6.8			
STANDARD	JEC-2137-2000			
EFFICIENCY RULE	IEC 60034-30-1			
INSTALLATION	FOOT MOUNTED			
ROTATION	CCW (VIEWED FROM SHAFT END)			
BEARING	LOAD SIDE	: 6202ZZ		
	OPPOSITE SIDE	: 6201ZZ		
BEARING GREASE	UREA GREASE			
VIBRATION	V20			
CIRCUMSTANCE CONDITION	AMBIENT TEMPERATURE	: -20 ~ +40°C		
	AMBIENT HUMIDITY	: 85%RH OR LESS		
	ABOVE SEA LEVEL	: 1000m OR LESS		
	ENVIRONMENT	: NO BURSTING/EROSIVE GAS OR VAPOR		
COLOR	MUNSELL N1.5 (BLACK)			
TERMINAL BOX	NO. OF LEAD WIRES	: 2		
	SOURCE CONNECTION	: TERMINAL BLOCK		
INSULATION RESISTANCE	BY DC 500V MEGGER - ≥100MΩ			
DIELECTRIC TEST	AC 50Hz 1500V - 1min. (Based on rated voltage 220V)			
SHAFT SWING	≤0.03mm			
MATERIAL	FRAME	: STEEL PLATE		
	BRACKET	: STEEL PLATE		
	SHAFT	: CARBON STEEL		
	STATOR CORE	: ELECTRICAL STEEL		
	WIRE	: ENAMELLED COPPER MAGNET WIRE		
	INSULATOR	: POLYESTER FILM		
	VARNISH	: EPOXY DENATURALIZATION POLYESTER		
	ROTOR CORE	: ELECTRICAL STEEL		
	CONDUCTOR	: ALUMINIUM		
	TERMINAL BOX	: PLASTIC		
PAINING	: ALKYD-NITROCELLULOSE RESIN			
PRODUCTION COUNTRY	THAILAND			

Specifications subject to change without notice.

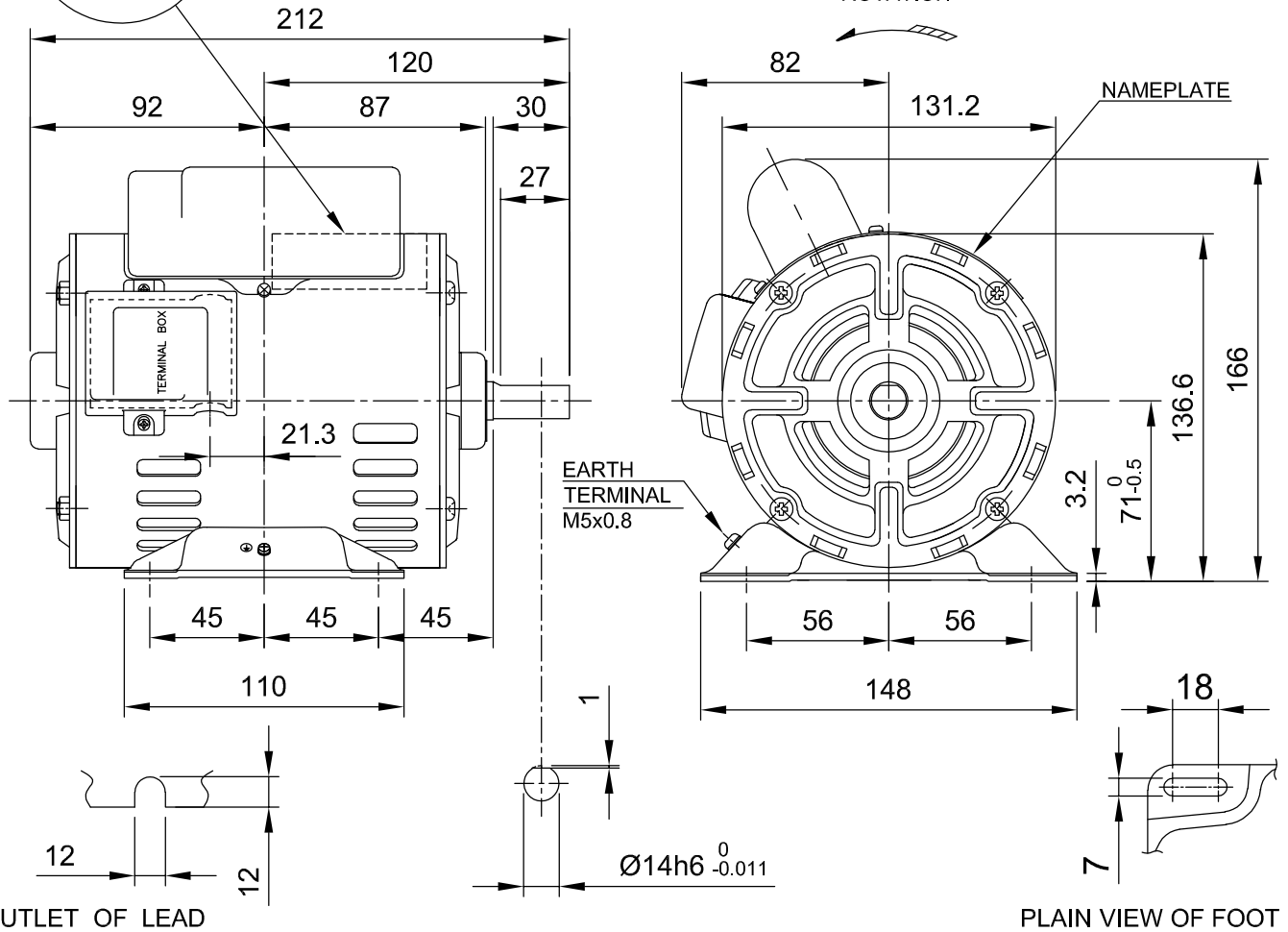
<b>SPECIFICATION SHEET NO.</b>				
SS-M-7300-B				

# MODEL SC-QR SINGLE PHASE INDUCTION MOTOR OUTLINE DRAWING

CAPACITOR START TYPE  
DEGREE OF PROTECTION IP20

STARTING CAPACITOR	80 µF 250 V
RUNNING CAPACITOR	-

CUSTOMER	_____
USER	_____
FOR	_____
CUSTOMER'S ORDER NO.	_____
QUANTITY	_____
MFG. ORDER NO.	_____



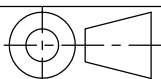
OUTLET OF LEAD

PLAIN VIEW OF FOOT

FRAME SIZE	RATING	TH. CLASS	AMB. TEMP.	BEARINGS		COLOR	DIRECTION OF ROTATION	NO. OF LEAD WIRES
				LOAD SIDE	OPP. SIDE			
A71	S1	120(E)	40°C	6202ZZ	6201ZZ	BLACK (MUNSELL N1.5)	CCW	TERMINAL BOARD

OUTPUT		POLE	Hz	VOLT	AMP	RPM	IE CODE - RATED EFF.	REMARK
HP	kW							
1/4	0.2	4	50	220/230	2.6/2.7	1450/1450	IE1- 65.5% / IE1- 62.5%	
			60	220	2.3	1740	IE1- 70.8%	

MITSUBISHI ELECTRIC AUTOMATION (THAILAND) CO.,LTD.



DIMENSION IN mm.  
SCALE : NTS.

OUTLINE DRAWING NO.

**ONM740090**

REV.

